

“Unique” Success

Randy Martins

Henry County Assistive Technology Specialist

Julie Beacham

Henry County Assistive Technology Specialist

Learning Objectives

- * Identify and describe key components in the successful implementation of the Unique Curriculum in self-contained classes for students with Intellectual Disabilities
- * Identify tools that can enhance the Unique Learning Curriculum
- * Understand how to use data provided within the curriculum to drive instruction, for annual reporting and for teacher evaluation

Implementation

This is the 6th year that Henry County Schools has used the Unique Learning Curriculum as the required curriculum for almost 90 self contained classrooms in the district for students with Intellectual Disabilities. Special Education Leadership have received an overview of the curriculum and the data collection components.

On-going Reinforcements

- * There is a designated manager who adds teachers, designates grade bands, intervenes when there are problems with the website, provides training, and serves as liaison to N2Y. The manager also maintains direct communication with N2Y to address any teacher concerns on a timely basis.
- * Provide monthly reports to Principals, Coordinators and Student Support Facilitators regarding completed checkpoints, benchmarks and profiles.

Training

- * New teachers are trained at the beginning of the school year.
- * All teachers receive annual training to review any updates or changes in the Unique Curriculum.
- * Opportunities are provided for teachers to create support materials during Professional Learning Days through Make and Take sessions. (using SymbolStix and TarHeel Reader).

Tools Within Unique

- * Monthly Lessons
- * Teacher Reference Materials
- * Support Center

Technology and “Unique” Success

- * One of the keys to the success of the Unique Curriculum in Henry County Schools has been the additional technology that is being implemented in our self contained classrooms. More than 1/3 of the classrooms have Promethean Boards, all have 2 touch screen monitors and all classrooms have one Ipad. Training on use of all hardware and software is mandatory. Teachers typically will receive PLU credit for attending classes.

Interactive White Boards



Technology Supports

Boardmaker Studio

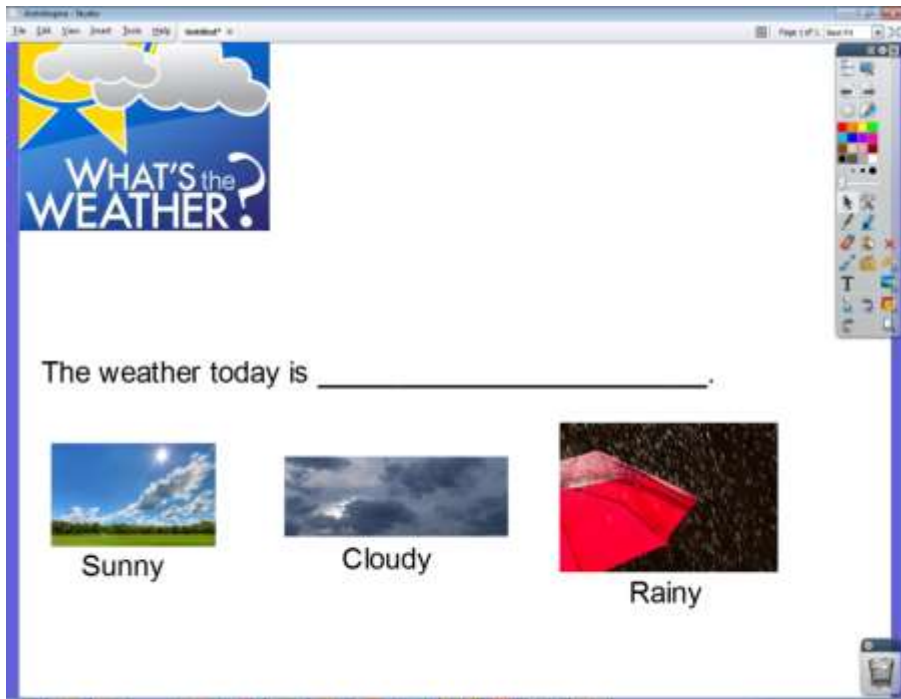


First Author



Technology Supports

ActivInspire



WHAT'S the WEATHER?

The weather today is _____

Sunny Cloudy Rainy

PixWriter

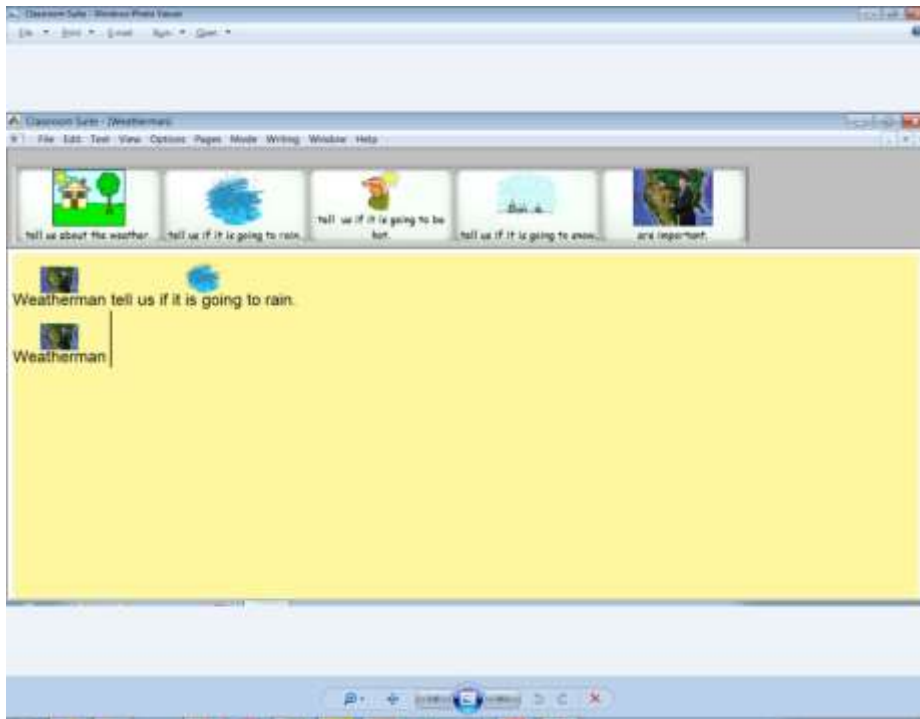


There are four seasons every year.

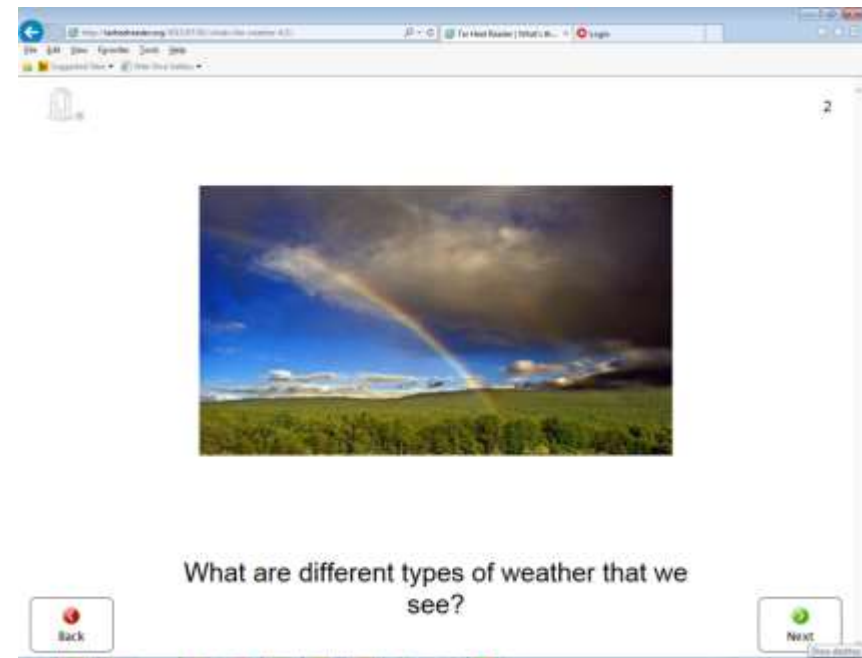
there	are	every	year	grow	pretty	hot	outside	flowers	colors	snow
seasons	Spring	Fall	it	start	turn	cold	in	grass	when	dead
four	Summer	Winter	we	to	play	many	the	leaves	&	is

Technology Supports

Classroom Suite



Tar Heel Reader



Data

Benchmark testing, monthly pre/post tests and student profile data is available for each student. This data can be used to differentiate instruction, show student achievement and progress and assist in developing individual/group goals. The data may also be used for teacher evaluation documentation.

Henry County Assessment Guidelines

- * Update profiles annually (by September 15)
- * Benchmarks completed 3 times per year (September, January and May)
- * Pre and Post tests completed each month (excluding August and December)
- * Henry County uses one section of the Reading Comprehension Benchmark for Student Learning Objectives

What's next?

- * Beginning Fall 2015, teachers in Henry County will be trained on how to use individual and group tracking skills within Unique Learning.
- * Increase the number of classrooms in Henry County with Promethean Boards to optimize the use of the interactive components.
- * Train staff on new components (updated Symbolstix, interactive tool for Ipads, and math journals)